

Nematode Management for Bedding Plants¹

William T. Crow²

Florida is the “land of flowers.” Surely, one of the things that Florida is known for is the beauty of its vegetation. Due to the tropical and subtropical environment, color can abound in Florida landscapes year-round. Unfortunately, plants are not the only organisms that enjoy the mild climate. Due to warm temperatures, sandy soil, and humidity, Florida has

more than its fair share of pests and pathogens that attack bedding plants. Plant-parasitic nematodes (Figure 1) can be among the most damaging and hard-to-control of these organisms.

What are nematodes?

Nematodes are unsegmented roundworms, different from earthworms (<http://edis.ifas.ufl.edu/in946>) and other familiar worms that are segmented (annelids) or in some cases flattened and slimy (flatworms). Many kinds of nematodes may be found in the soil of any landscape. Most are beneficial, feeding on bacteria, fungi, or other microscopic organisms, and some may be used as biological control organisms to help manage important insect pests. Plant-parasitic nematodes are nematodes that feed on live plants (Figure 1).

Plant-parasitic nematodes are very small and most can only be seen using a microscope (Figure 2). All plant-parasitic nematodes have a stylet or mouth-spear that is similar in structure and function to a hypodermic needle (Figure 3). The stylet is used to puncture plant cells and then inject digestive juices and ingest plant fluids. Most of the plant-parasitic nematodes that are important on ornamental plants in Florida feed on roots. Some plant-parasitic nematodes, called ectoparasites, remain in the soil and

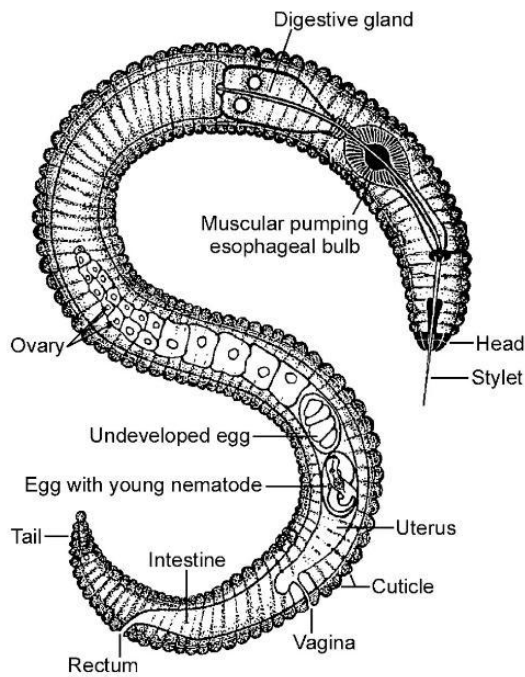


Figure 1. Diagram of a generic plant-parasitic nematode.

1. This document is ENY-052 (IN470), one of a series of the Entomology and Nematology Department, UF/IFAS Extension. Original publication date April 2003. Revised February 2014. For more publications related to horticulture/agriculture, please visit the EDIS website at <http://edis.ifas.ufl.edu/>.
2. William T. Crow, professor, Entomology and Nematology Department, Cooperative Extension Service, Institute of Food and Agricultural Sciences, University of Florida, Gainesville, FL 32611.

The use of trade names in this publication is solely for the purpose of providing specific information. UF/IFAS does not guarantee or warranty the products named, and references to them in this publication does not signify our approval to the exclusion of other products of suitable composition. All chemicals should be used in accordance with directions on the manufacturer’s label. Use pesticides safely. Read and follow directions on the manufacturer’s label.

The Institute of Food and Agricultural Sciences (IFAS) is an Equal Opportunity Institution authorized to provide research, educational information and other services only to individuals and institutions that function with non-discrimination with respect to race, creed, color, religion, age, disability, sex, sexual orientation, marital status, national origin, political opinions or affiliations. For more information on obtaining other UF/IFAS Extension publications, contact your county’s UF/IFAS Extension office. U.S. Department of Agriculture, UF/IFAS Extension Service, University of Florida, IFAS, Florida A & M University Cooperative Extension Program, and Boards of County Commissioners Cooperating. Nick T. Place, dean for UF/IFAS Extension.

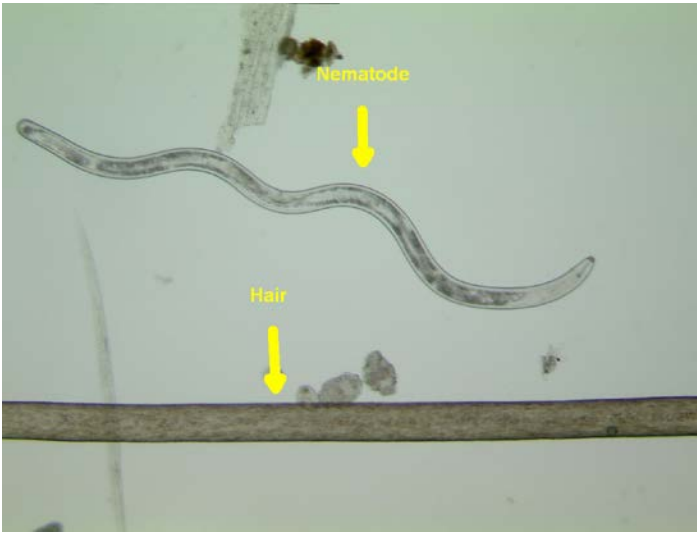


Figure 2. Size of a lance nematode (one of the larger plant-parasitic nematodes) compared to a human hair.

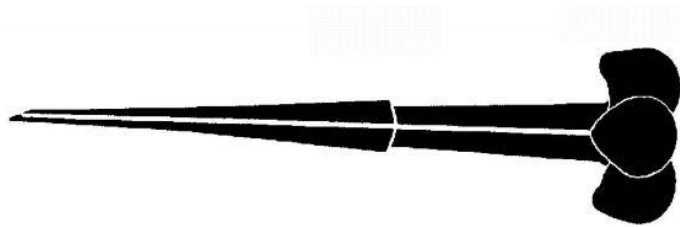


Figure 3. Diagram of a plant-parasitic nematode stylet.

feed by inserting only their stylet into the root. Other nematodes enter the plant with part or all of their body and are called endoparasites. Some endoparasites, called migratory endoparasites, continually burrow around inside the root (Figure 4). Other endoparasites, called sedentary endoparasites, establish permanent feeding sites inside the root and remain in one place. As it matures, a sedentary endoparasite's body changes shape and adult females are usually swollen (Figure 5).



Figure 4. Migratory endoparasitic lance nematodes (stained red) tunneling within a root.

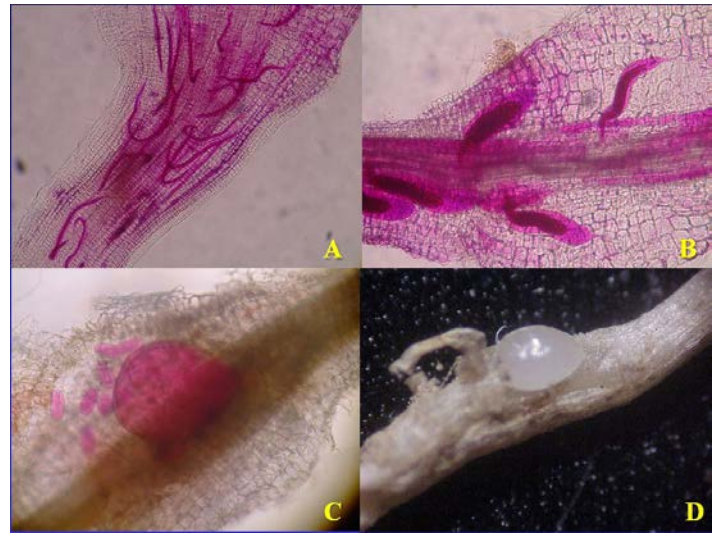


Figure 5. Sedentary endoparasitic root-knot nematodes. A: Juvenile nematodes (stained red) that have entered a root and have formed feeding sites within. B: Juveniles become immobile and start to swell. C: Swollen adult nematode starting to lay eggs. D: Root tissue pulled back to reveal the adult nematode within.

How do nematodes damage plants?

As plant-parasitic nematodes feed, they damage a plant's root system and reduce its ability to obtain water and nutrients from the soil. When nematode numbers increase, and/or when environmental stresses occur, aboveground symptoms may become evident. Aboveground nematode symptoms often resemble nutrient deficiencies or drought stress. Symptoms include yellowing, wilting, thinning, and stunting (Figure 6). These symptoms occur because the damaged roots cannot take up water and nutrients from the soil properly. If planted into beds that already have high numbers of plant-parasitic nematodes, plants may become stunted and slowly die. Nematode damage usually occurs



Figure 6. Stunted impatiens on right were infected by root-knot nematodes. Healthy impatiens on left were treated with a nematicide.

in localized areas that may enlarge slowly over time. While other types of nematodes may damage bedding plants on occasion, in Florida the most common are root-knot, sting, awl, and stubby-root nematodes. Be aware that similar conditions may be caused by other factors such as localized soil conditions, fungal diseases, or insects.

Root-Knot Nematodes

Root-knot nematodes are the most well-known of the plant-parasitic nematodes. These are sedentary endoparasites. Although other species are known to occur, four species are common in Florida on bedding plants: *Meloidogyne incognita*, *M. arenaria*, *M. javanica*, and *M. enterolobii*. These nematodes inject hormones into plants' roots that cause knots or galls to form (Figure 7). These galls are typically easy to recognize. In addition to galls, root-knot nematodes cause other physical and physiological changes in the plant. These changes can make plants more prone to fungal and bacterial plant diseases such as root rot or vascular wilt. Sometimes the damage caused by the nematodes and the other organisms together is worse than that caused by both organisms separately.



Figure 7. Root-knot nematode galls on roots.

Root-knot nematodes are one of the most destructive plant parasites. High infestations can kill many types of bedding plants. Table 1 lists some of the annual bedding plants common in Florida, and their susceptibility to several species of root-knot nematodes. This is not an exhaustive list; the majority of plants may occasionally be affected by root-knot nematodes. Different cultivars of the same plant species may react differently to the nematodes. Table 2 shows the reactions of several different cultivars of *Vinca* (periwinkle), and *Salvia* to several species of root-knot nematodes.

Sting, Awl, and Stubby-Root Nematodes

Several ectoparasitic nematodes are capable of causing damage to bedding plants in Florida. The most destructive of these are the sting (<http://edis.ifas.ufl.edu/in395>), awl (<http://edis.ifas.ufl.edu/in397>), and stubby-root (<http://edis.ifas.ufl.edu/in617>) nematodes. Feeding by these nematodes usually causes roots to be stunted or stubby-looking (Figure 8). All of these nematodes are capable of destroying a plant root system, causing stunting and wilting, or killing the plants. Sting nematodes are found in sandy soil and are common throughout much of Florida. Awl nematodes are usually found in wet habitats, for instance, near ditches, ponds, or poorly drained areas. Several stubby-root species are found in Florida. One or more can usually be found in most Florida habitats.



Figure 8. Stubby roots caused by ectoparasitic sting nematode.

How do I know if nematodes are my plants' problem?

With any plant problem, having an accurate diagnosis is important to address the problem, and to avoid wasting effort and unnecessary pesticide applications. Generally, nematode symptoms resemble the symptoms of other disorders, so visual inspection is not enough. The only reliable way to determine if plant-parasitic nematodes are causing or contributing to a plant problem is to have a nematode assay conducted by a professional nematode diagnostic lab. The Florida Nematode Assay Lab, at University of Florida, will evaluate nematode samples for a cost of \$20.00 each. See the Florida Nematode Assay Lab website at <http://nematology.ifas.ufl.edu/assaylab/> for information on forms, fees, and sample submission. The lab staff will assign a level of risk to the sample based on what kind of nematodes they find, how many nematodes there are, and the type and age of the plants involved. To make an accurate nematode diagnosis, the lab must have a quality sample. Whether you

are submitting a sample to the Florida Assay Lab or another lab, following the guidelines below can help ensure that the results will be as accurate as possible.

Sampling

Sometimes samples are collected before planting to find out if nematodes are a potential problem and, if so, to take protective measures. Pre-plant samples will typically only consist of soil. After planting, samples are collected from sick plants to determine if nematodes are the cause of plant decline. Samples taken after planting require both soil and roots.

Before planting: Collect soil from 8 to 12 locations in a planting bed. Samples should be taken about 6 to 8 inches deep. If the soil is dry, dig down to where there is some soil moisture to collect the samples and do not include the dry soil. A small handful of soil from each location is adequate. Combine all the soil into a single plastic bag. The total volume of soil from the samples should be about 1 pint. Samples may be taken with a shovel, trowel, or other device. If you use a shovel, you can put part of the soil from 8 to 12 shovels full into a bucket. Thoroughly mix the soil in the bucket, and then take out a pint to submit for analysis.

After planting: Often a nematode assay is needed to determine if nematodes are causing a plant to get sick. This type of sample requires both **soil and roots!** Dig soil and roots from underneath the canopy of the symptomatic plants. Sample depth depends on the size of the plant. For most bedding plants, 6 inches deep is adequate. Do not include the top 1 inch of soil. If multiple plants are affected, collect some soil and roots from several plants. Place the soil and roots together in the same plastic bag. A minimum of 1 pint of soil and 1 to 2 cups of roots are required. For small bedding plants, entire plants with the soil from around their roots can be submitted.

Handling

1. Nematode samples should be kept in plastic bags to keep the sample moist. *Do not send samples in soil test bags.* Soil testing bags are designed to dry soil out, and dried-out samples are no good for nematode diagnosis. If using a self-sealing bag, tape the seal shut so that the bag does not come open in the mail.
2. If submitting more than one sample, make sure that the outside of each bag is labeled with a permanent marker. You can also write on masking tape stuck to the bag. Do not put paper labels inside of bags because they tend to decompose and become illegible.

3. Keep samples out of direct sunlight or heat. Heat and ultraviolet light kill nematodes. Even a few minutes on the dashboard or in the back of a pickup can invalidate assay results. Keep the samples in an air conditioned room until they can be shipped.
4. Handle the sample gently and pack it well. The more the soil gets banged around, the more the nematodes may get destroyed.
5. Fill out the information on the forms with as much information as possible. The diagnostician needs detailed information about the type of plant or plants in question and the cultivar, if known. Make sure that the information on the form matches the identification on the sample bag (i.e., front yard, back yard, coleus bed).

What can I do about nematodes?

Chemicals

There are no chemical nematicides labeled for use on annual bedding plants that have been effective in University of Florida trials.

Biopesticides

The bionematicide MeloCon WG contains a fungus that parasitizes nematode eggs. Results from University of Florida trials indicate that MeloCon can suppress but not eliminate root-knot and sting nematodes. When purchasing MeloCon, have it delivered directly to you from the manufacturer and keep it frozen until it is used. To apply, mix MeloCon with water and then either drench the planting bed with it or spray it onto the planting bed and irrigate. MeloCon works best when it is administered in multiple applications starting before transplanting and continuing through the growing season. It is generally not effective when used to treat established plants after they have been damaged by nematodes.

Resistance and Tolerance

Plants on which a particular nematode cannot reproduce are called **resistant** to that nematode. Plants that can be fed on by the nematode without damage are called **tolerant**. Although a great deal of work has gone into identifying nematode-resistant agronomic and vegetable crops, little work has been done with bedding plants. This is an area of research we are currently exploring at the University of Florida. For now, the plants identified as susceptible in Tables 1 and 2 should be avoided in areas where root-knot nematodes are known to occur. If you grow resistant plants but have plans to plant susceptible plants later, keep the area

as weed-free as possible. If weeds are allowed to grow, the nematodes may maintain their populations by feeding on the weeds.

Marigolds are often promoted as nematode-resistant. Table 3 lists the susceptibility of a number of species and cultivars of marigold to different species of root-knot nematodes. Different types of marigolds are resistant to different species of root-knot nematodes. Few cultivars are resistant to all of them. Therefore, while marigolds may grow very well in soil infested by root-knot nematodes, there is always a possibility of nematode damage occurring.

Several cultivars of salvia appear to be resistant to at least two of the root-knot species common in Florida (Table 4). These cultivars may be useful for planting in soil infested with root-knot nematodes. Vinca (Periwinkle) is a plant that does not support populations of certain root-knot nematodes even though it may have galling (Table 4). So, once the plant gets past the initial galling, it should do well.

Soil Solarization

Soil solarization (<https://edis.ifas.ufl.edu/in856>) is a process of using heat from the sun to kill nematodes and other pests. The soil should be worked with a hoe or rototiller to break up clods. Remove all sticks, roots, and clumps. The soil should be moist, but not wet. Cover the soil with a clear plastic tarp and bury the edges of the plastic (Figure 9). Leave the plastic on the soil for at least 4 to 6 weeks. Do not remove the plastic until you are ready to plant.

Sunlight goes through the clear plastic and heats the soil underneath. The plastic then holds in the heat so that it penetrates and warms the soil. Long-term exposure to high temperature kills nematodes, as well as many weeds, fungi, and insect pests. The disinfested zone is usually 6 to 8 inches deep. Do not till or mix the soil after solarization. That may reinfest the soil you just solarized with nematodes from below the treated zone. Because it depends on sunlight and heat, solarization works best during the summer months. It does not work well in areas that get shade. Only solarize planting beds that get full sun.

The benefits of solarization may be enhanced by using a second layer of plastic suspended by wire hoops. An air gap is created between the two layers of plastic, giving extra insulation. Also, weeds that penetrate the first layer may then be killed by heat trapped between the plastic layers.



Figure 9. Soil solarization being conducted in a landscape.

Organic amendments

Organic amendments can be added to soil as compost, manure, green manure, or other materials (<http://edis.ifas.ufl.edu/vh037>). Organic matter can help prevent nematode damage in several ways. The organic matter increases the ability of the soil to hold water and nutrients, and it improves soil structure. This makes a better environment for most plants and can help the plants survive in spite of the nematodes. Organic amendments can also increase natural enemies of nematodes that suppress the nematode populations. Some organic amendments can release chemicals or gasses that are toxic to the nematodes.

There are several “organic” nematode management products for sale. Researchers with the University of Florida have worked with a number of these, but probably not all of them. In the majority of cases, these products work no better than adding any other, less expensive, organic material.

Planting

Nematode activity slows as soil temperatures drop. Therefore, annual plants grown in cooler months do not suffer as much from nematodes as those grown in warmer months. Become familiar with the temperature requirements of the plant and grow as early as possible in the spring or as late as possible in the fall.

Older transplants generally are more resistant to nematodes than younger transplants. So, older transplants should be used in nematode-infested soil. Inspect the roots of all landscape plants before purchase for root-knot galls or other root-related problems. Occasionally nematodes can be introduced with contaminated plants.

Sanitation

Roots left in the soil can continue to live and support nematode reproduction. Root-knot nematode eggs are attached to roots and will continue to hatch even after the plant appears to be dead. Therefore, as soon as it is clear that a plant is dying, it is best to pull it up. Make sure to dig up as many roots as possible and destroy them.

Be aware that when soil is moved, pathogens can be moved with it. After digging up sick plants, make sure that any shovels or other equipment are thoroughly cleaned to avoid moving nematodes and plant pathogens to new areas.

Remove Infested Soil

In annual planting beds, it is sometimes practical to replace infested soil and start over. Nematodes may re-infest the soil later, but by then the plants should have a good root system established. The better developed the root system is, the more tolerant the plant will be to nematodes. The benefits of replacing soil may only last a season or two.

Container Growing

Growing plants in containers off the ground is a way to avoid nematode problems. Make sure you inspect the plants for root-knot galls. You don't want to introduce a problem. Also use clean potting media. Do not mix potting media with native soil because you might contaminate it.

Summary

Following the recommendations listed in this document can help you avoid or reduce problems with plant-parasitic nematodes in the landscape. However, there are no guarantees of success. County and state faculty with the University of Florida are continually exploring new nematode management options. The most current recommendations can be obtained from the University of Florida Extension website, Solutions for Your Life at <http://solutionsforyourlife.ifas.ufl.edu/>.

Table 1. Root galling and reproduction of root-knot nematodes on 12 annual ornamental species.¹ Columns show reactions of each plant species to a root-knot nematode population in work done by C. C. Goff in the 1930s (more plants are listed in Table 2), common root-knot nematode (*Meloidogyne incognita*), javanese root-knot nematode (*M. javanica*), and “peanut” root-knot nematode (*M. arenaria*).

Bedding Plants -- Common Names	Goff's Rating ²	<i>Meloidogyne incognita</i>		<i>Meloidogyne javanica</i>		<i>Meloidogyne arenaria</i>	
		Galling ²	Eggs ²	Galling ²	Eggs ²	Galling ²	Eggs ²
Ageratum 'Blue Mink'	---	0	0	0	0	0	0
Alyssum 'Rosie O'Day'	VL	---	---	0	0	0	VL
Celosia 'Century Mix'	VH	M	H	L	M	H	H
Coleus 'Rainbow'	H	VL	L	M	L	M	VH
Dianthus 'Baby Doll Mix'	L	L	0	VL	VL	VL	VL
Marigold 'Dwarf Primrose'	0	0	0	0	0	VL	VL
Periwinkle 'Little Bright Eye'	VL	0	0	VL	VL	L	VL
Petunia 'Dwarf Bedding'	L	L	VL	VL	M	L	L
Salvia 'Bonfire'	VL	0	0	VL	VL	---	---
Snapdragon 'First Ladies'	H	VH	VH	VH	H	VH	VH
Verbena 'Florist'	L	VL	VL	VH	M	VH	VH
Zinnia 'Scarlet'	VL	VL	VL	M	M	VL	VL

¹ McSorley & Frederick, J. Nematol. 26(4S):773-777. 1994.

² Ratings: root galling (0 = no galling; VL = 0.1 – 1.0; L = 1.01 – 2.0; M = 2.01 – 3.0; H = 3.01 – 4.0; VH = 4.01 – 5.0); reproduction (0 = no eggs; VL = 1 – 1000 eggs per plant; L = 1001 – 3000; M = 3001 – 9000; H = 9001 – 15000; VH >15000; --- = plant not included in experiment. Only root galling ratings are available from Goff's work.

Table 2. Susceptibility of some annual ornamental plants to root-knot nematodes in Central Florida.*

Common Name	Scientific Name	Rating	Number of Tests
Not Infested, No Galls Found			
Marigold, African	<i>Tagetes</i> sp.	0	2
Marigold, French	<i>Tagetes</i> sp.	0	1
Coreopsis	<i>Coreopsis lanceolata</i>	0	2
Argemone	<i>Argemone</i> sp.	0	1
Rudbeckia	<i>Rudbeckia</i> sp.	0	1
Ageratum	<i>Ageratum</i> sp.	0	1
Evening primrose	<i>Oenothera erythrocephala</i>	0	1
Gaillardia	<i>Gaillardia</i> sp.	0	2
Very Lightly Infested, with One or Few Scattered Galls			
Michaelmas daisy	<i>Aster tradescanti</i>	1	2
Lupine	<i>Lupine</i> sp.	1	1
Calliopsis	<i>Coreopsis tinctoria</i>	4	3
Four-o'clock	<i>Mirabilis jalapa</i>	4	3
Cosmos	<i>Cosmos bipinnatus</i>	4	3
Zinnia, small	<i>Zinnia elegans</i>	5	3
Zinnia, giant	<i>Zinnia elegans</i>	11	1
Sweet alyssum	<i>Lobularia maritima</i>	7	3
Torenia, blue	<i>Torenia fournieri</i>	17	2
Torenia, white	<i>Torenia</i> sp.	17	1
Thunbergia	<i>Thunbergia</i> sp.	22	1
Blue sage	<i>Salvia farinacea</i>	10	1
Scarlet sage	<i>Salvia splendens</i>	20	1
Arctotis	<i>Arctotis stoechadifolia</i>	14	3
Phlox, big Drummond	<i>Phlox drummondii</i>	19	4
Phlox, dwarf	<i>Phlox drummondii nana compacta</i>	31	1
Phlox, starred	<i>Phlox drummondii stellaris</i>	26	1
Statice	<i>Limonium sinatum</i>	18	1
Globe amaranth	<i>Gomphrena globosa</i>	25	1
Gerbera daisy	<i>Gerbera jamesonii</i>	24	2
Vinca, periwinkle	<i>Catharanthus rosea</i>	30	2
Stock	<i>Matthiola</i> sp.	31	2
Leptosyne	<i>Coreopsis</i> sp.	29	1
Lightly Infested, with a Number of Small Galls			
Godetia	<i>Godetia</i> sp.	36	2
China aster	<i>Callistephus chinensis</i>	38	2
Penstemon	<i>Penstemon</i> sp.	38	1
Dianthus	<i>Dianthus</i> sp.	45	2
Portulaca	<i>Portulaca</i> sp.	40	2
Verbena	<i>Verbena</i> sp.	27	3
Lantern groundcherry	<i>Physalis franchetii</i>	40	1
Perennial sweet pea	<i>Lathyrus latifolius</i>	42	1
Liatris spicata	<i>Liatris spicata</i>	44	1
Clarkia	<i>Clarkia</i> sp.	23	2
Shasta daisy	<i>Chrysanthemum maximum</i>	48	2

Common Name	Scientific Name	Rating	Number of Tests
Lightly Infested, with a Number of Small Galls			
Candytuft	<i>Iberis umbellata</i>	46	2
Mignonette	<i>Reseda odorata</i>	50	1
Cypress vine	<i>Ipomoea quamoclit</i>	50	1
Artemisia	<i>Artemisia gemelinii</i>	50	1
Petunia	<i>Petunia hybrida</i>	52	3
Moderately Infested, with Galls More Numerous or Larger			
Acroclinium	<i>Helipterum roseum</i>	55	2
Linaria	<i>Linaria</i> sp.	56	2
Poppy	<i>Papaver</i> sp.	56	1
Moonflower	<i>Ipomoea</i> sp.	58	2
Perennial chrysanthemum	<i>Chrysanthemum</i> sp.	59	1
Nicotiana	<i>Nicotiana glauca</i>	59	1
Hunnemannia (Mexican tulip poppy)	<i>Hunnemannia fumariaefolia</i>	60	1
Annual chrysanthemum	<i>Chrysanthemum coronarium</i>	65	1
Dimorphotheca	<i>Dimorphotheca sinuata</i>	66	2
English daisy	<i>Bellis perennis</i>	67	1
Scarlet climber or cardinal climber	<i>Ipomoea X multifida</i>	71	2
California poppy	<i>Eschscholtzia californica</i>	71	2
Heavily Infested: Large Percentage of Roots with Large Galls			
Coleus	<i>Coleus</i> sp.	71	2
Columbine	<i>Aquilegia</i> sp.	74	1
Sunflower	<i>Helianthus annuus</i>	73	3
Chinese forget-me-not	<i>Cynoglossum</i> sp.	73	3
Baby's breath	<i>Gypsophila</i> sp.	77	2
Gilia	<i>Gilia</i> sp.	77	1
Matricaria	<i>Matricaria</i> sp.	80	1
Nasturtium	<i>Tropaeolum</i> sp.	85	2
Snapdragon	<i>Antirrhinum majus</i>	84	2
Hollyhock	<i>Althea rosea</i>	82	1
Salpiglossis	<i>Salpiglossis sinuata</i>	84	1
Pansy	<i>Viola tricolor</i>	87	2
Centaurea	<i>Centaurea cyanus</i>	90	3
Very Heavily Infested: Practically All Roots with Many Large Galls			
Butterfly flower	<i>Schizanthus</i> sp.	87	1
Morning-glory	<i>Ipomoea</i> sp.	91	2
Larkspur	<i>Delphinium</i> sp.	90	1
Lobelia	<i>Lobelia erinus</i>	94	3
Helichrysum	<i>Helichrysum</i> sp.	96	2
Amaranthus	<i>Amaranthus</i> sp.	93	1
Calendula	<i>Calendula officinalis</i>	93	2
Calendula, radio	<i>Calendula officinalis</i>	87	1
Balsam	<i>Impatiens balsamina</i>	100	1
Blue lace flower (Didiscus)	<i>Trachymene caerulea</i>	73	3
Annual sweet pea	<i>Lathyrus odoratus</i>	96	2

Common Name	Scientific Name	Rating	Number of Tests
Very Heavily Infested: Practically All Roots with Many Large Galls			
Celosia	<i>Celosia argentea</i>	99	2
Dolichos	<i>Dolichos</i> sp.	100	1
Gourd	<i>Cucurbita</i> sp.	100	1
* Goff, C. C. 1936. "Relative Susceptibility of Some Annual Ornamentals to Root Knot." Univ. of Florida Agr. Expt. Stn. Bull. 291. Plants were rated based on average gall ratings from all tests in which that plant species was included, on a scale from 0 (no galls) to 100 (all roots heavily galled).			

Table 3. Gallings and reproduction of root-knot nematodes on several common cultivars of *Salvia* and *Vinca*.

Cultivar	<i>M. incognita</i>		<i>M. javanica</i>	
	Galling	Reproduction	Galling	Reproduction
<i>Salvia (Salvia splendens)</i>				
Sea breeze	L	L	O	O
Oxford blue	H	M	H	H
Flare	O	O	O	O
Lady in red	O	O	O	O
Victoria	O	O	L	L
<i>Vinca (Catharanthus roseus)</i>				
Grape cooler	O	O	L	O
Blush cooler	H	O	H	O
Little bright eyes	H	O	H	O
Little mixed colors	H	O	H	O
Peppermint cooler	M	O	M	O
O = No galling or reproduction L = Low galling or reproduction M = Moderate galling or reproduction H = High galling or reproduction				
McSorley and Frederick, 2001				

Table 4. Marigold species and varieties differ in their usefulness in managing root-knot nematodes.¹

Marigold Species and Varieties	<i>M. incognita</i>	<i>M. arenaria</i>	<i>M. hapla</i>	<i>M. javanica</i>
American marigolds, <i>Tagetes erecta</i>				
'Alaska'	G*	G	M	G
'Cracker Jack'	G	G	G	M
'Diamond Jubilee'	G	M	P	G
'Flor de Muerto'	G	G	G	M
'Toreador'	G	G	P	G
Triploid hybrid marigold, <i>Tagetes erecta</i> X <i>T. patula</i>				
'Polynema'	G	P	M	M
'Red Nugget'	M	G	M	G
French marigolds, <i>Tagetes patula</i>				
'Bolero'	M	M	P	G
'Bonita Mixed'	G	G	G	M
'Goldie'	G	G	P	G
'Gypsy Sunshine'	G	G	G	P
'Petite'	G	G	G	G
'Petite Harmony'	G	G	P	G
'Scarlet Sophie'	G	G	G	P
'Single Gold'	G	G	G	P
'Tangerine'	G	G	M	G
Signet marigold, <i>Tagetes signata pumila</i>				
'Golden Gem'	P	P	P	P
'Tangerine Gem'	P	P	P	P
¹ Data from D. A. Rickard & A. W. Dupree, Jr. 1978. "The <i>Tagetes</i> effect on four <i>Meloidogyne</i> spp. on tomato in the greenhouse," 1977. <i>Fungicide & Nematicide Tests</i> 33: 208; and A. T. Ploey. 1999. "Greenhouse studies on the effect of Marigold." <i>Journal of Nematology</i> 31: 62-69. * G = Good, M = Moderate, P = Poor				